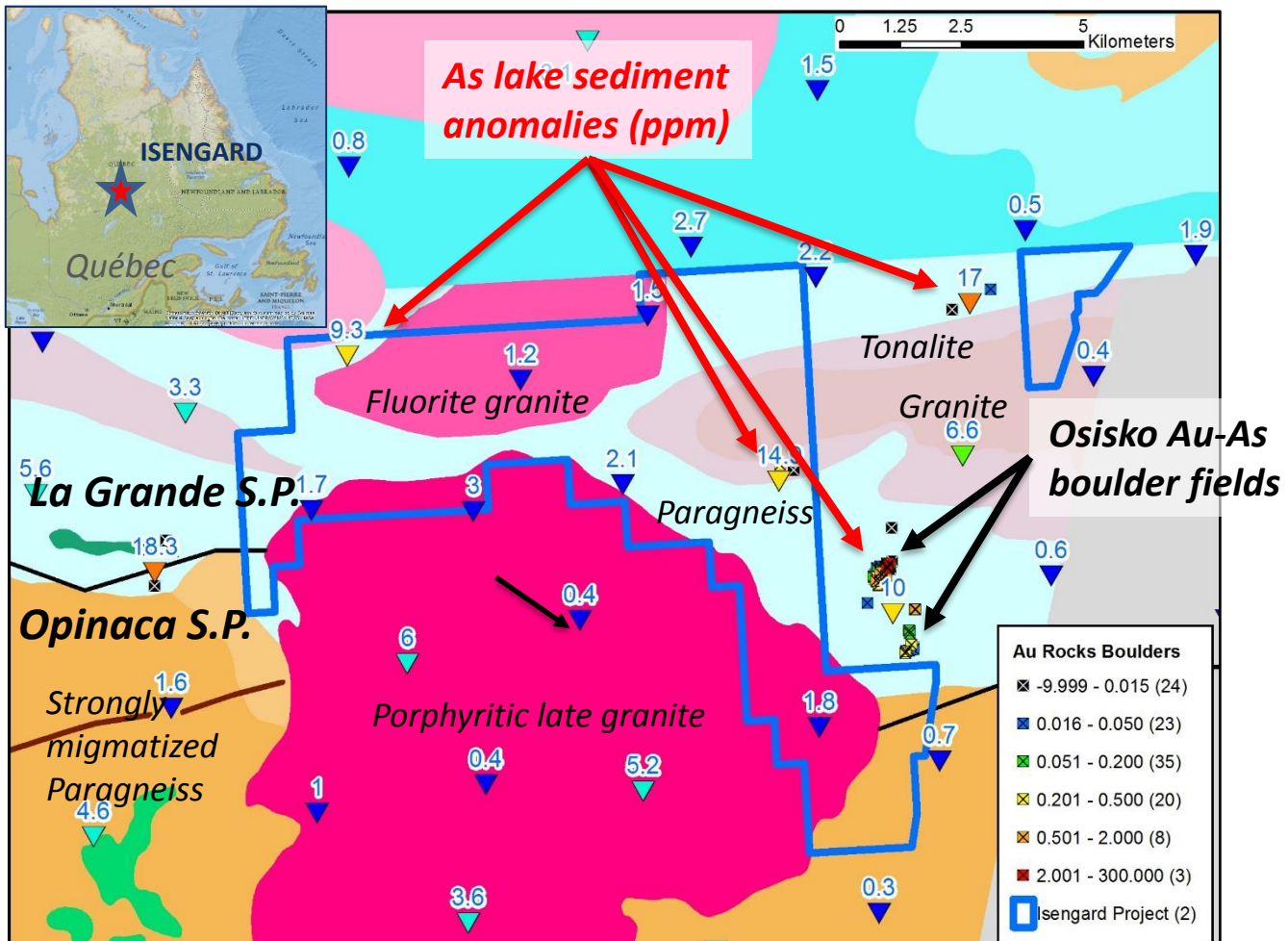


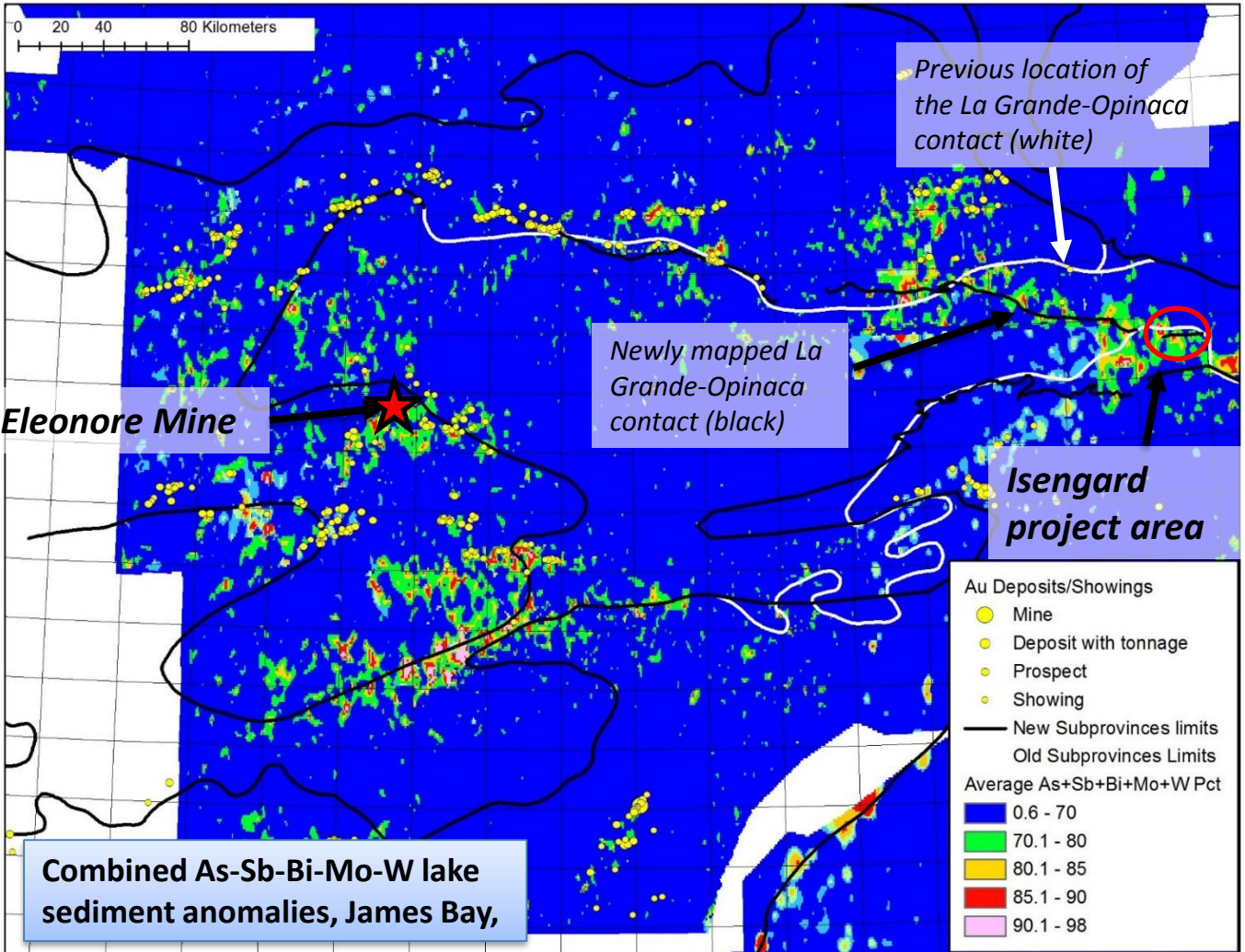
ISENGARD GOLD PROJECT



- The Isengard project is located at the contact between the La Grande and Opinaca subprovinces, which hosts most of the significant gold deposits in James Bay.
- Following new mapping by the Quebec government in 2016, the La Grande – Opinaca contact was re-interpreted as being much further south than previously believed, in a previously unexplored area. The Isengard project covers 12 kilometers of the newly interpreted contact zone.
- In 2015, Osisko found several gold-arsenopyrite boulder fields in an adjacent claim block, also covering the La Grande - Opinaca contact; it contains at least 51 boulders that yielded more than 0.1 g/t Au, with up to 8.0 g/t Au. The outcrop sources have not been found yet. Host rocks are mainly amphibolites, but gold-bearing sandstones, wackes and tonalites were also found. The Isengard project is located in stratigraphically equivalent rocks.
- Strong and unexplained arsenic lake sediment anomalies on Isengard suggest that similar gold-arsenic mineralization is present on the claim block.
- Mapping in 2016 by the government identified metamorphosed orogenic alteration zones, and gold lithogeochemical anomalies in late granitoids.



ISENGARD GOLD PROJECT



Sylvain Trépanier, P.Geo., is the qualified person, as defined by NI 43-101, who prepared the technical data presented here.

FOR FURTHER INFORMATION

Lawrence Winter
VP Exploration

Lwinter@altiusminerals.com
1-709-579-8278

www.altiusminerals.com
TSX:ALS
www.midlandexploration.com
TSX-V: MD

Sylvain Trépanier
VP Explo. Northern Quebec

Sylvain.Trepanier@midland
exploration.com
1-819-712-1693